

KLOOD IN

KLOOD IN

Sourabh Phadke



॥ MĀI FOOT PRASANNA ॥



BROKEN BEER BOTTLE

A bloody cutting edge publication by
Mai Foot Prasanna
&
Broken Beer Bottle

© Copyright 2014

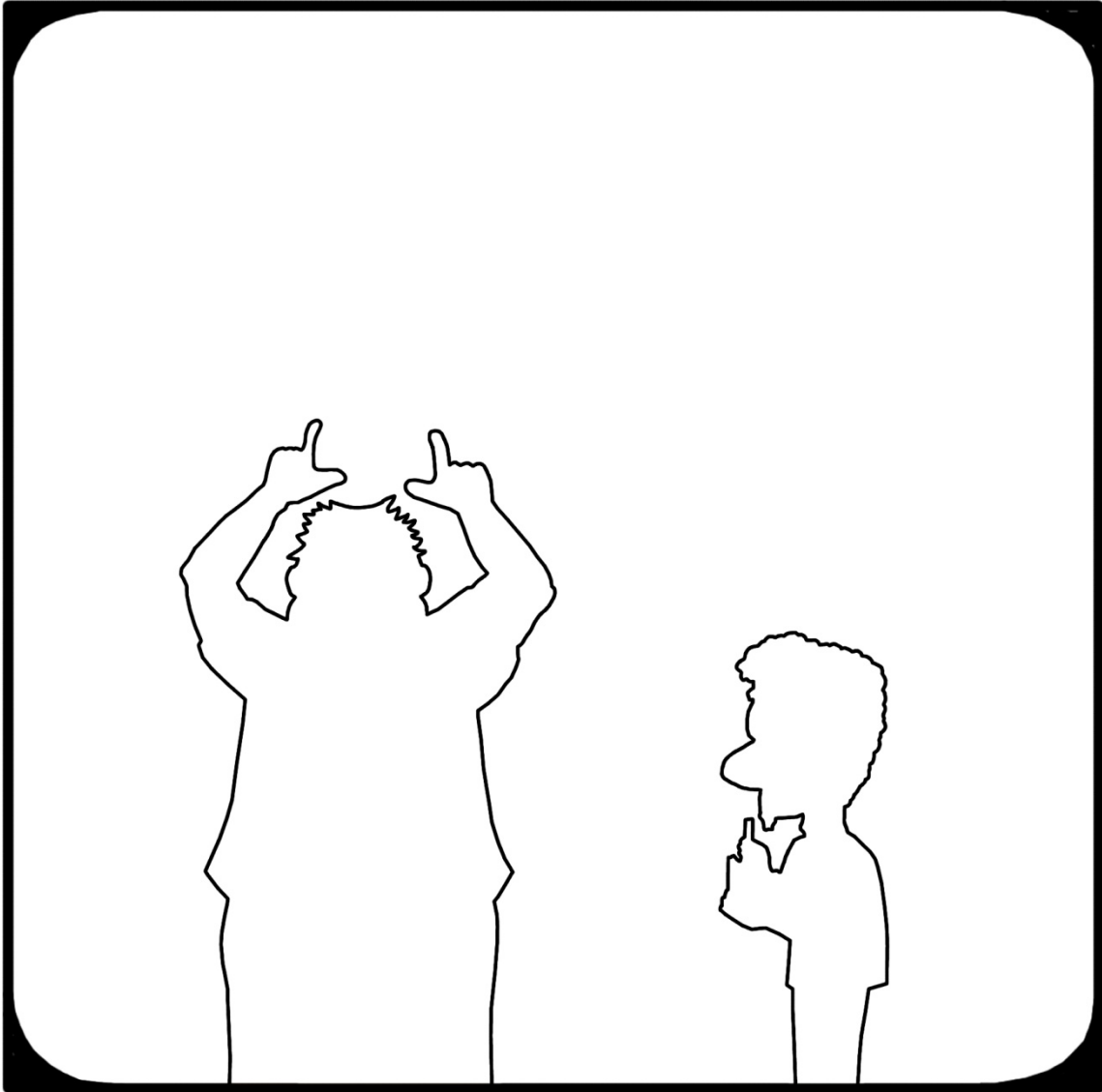
Online Edition: Free
Printed Edition: You print, You pay.

ISBN: Really? You think so?

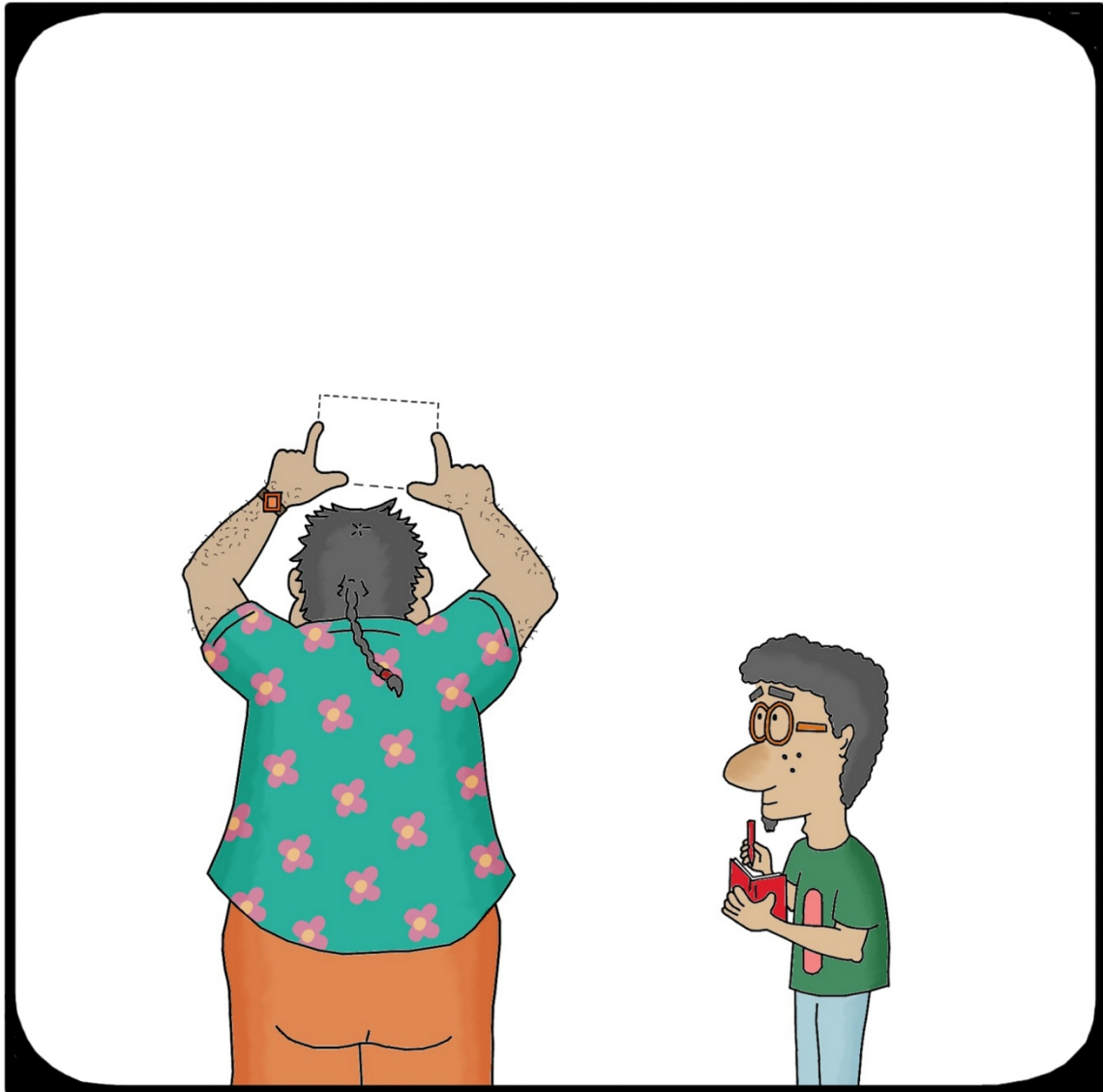
No rights reserved.

Feel free to translate, store, condemn, bathe with or reproduce
this publication in any form and by all means without the prior
permission of the publishers who in any case are fictitious.

Other such minor titles can be availed of at
www.soarhub.in



*A designer takes some time off to explain
his creation to an understudy...*



“And then the twenty marble clad steps will ascend to the awesomeness that is the entrance foyer...”



“Omm Sir, can I ask a question please?”



*“If. you. must.
Make it quick.”*



*“Sir, what if we have a ramp instead of the steps?
I mean, maybe it’d be easier for everyone to get up there?”*



(silence)



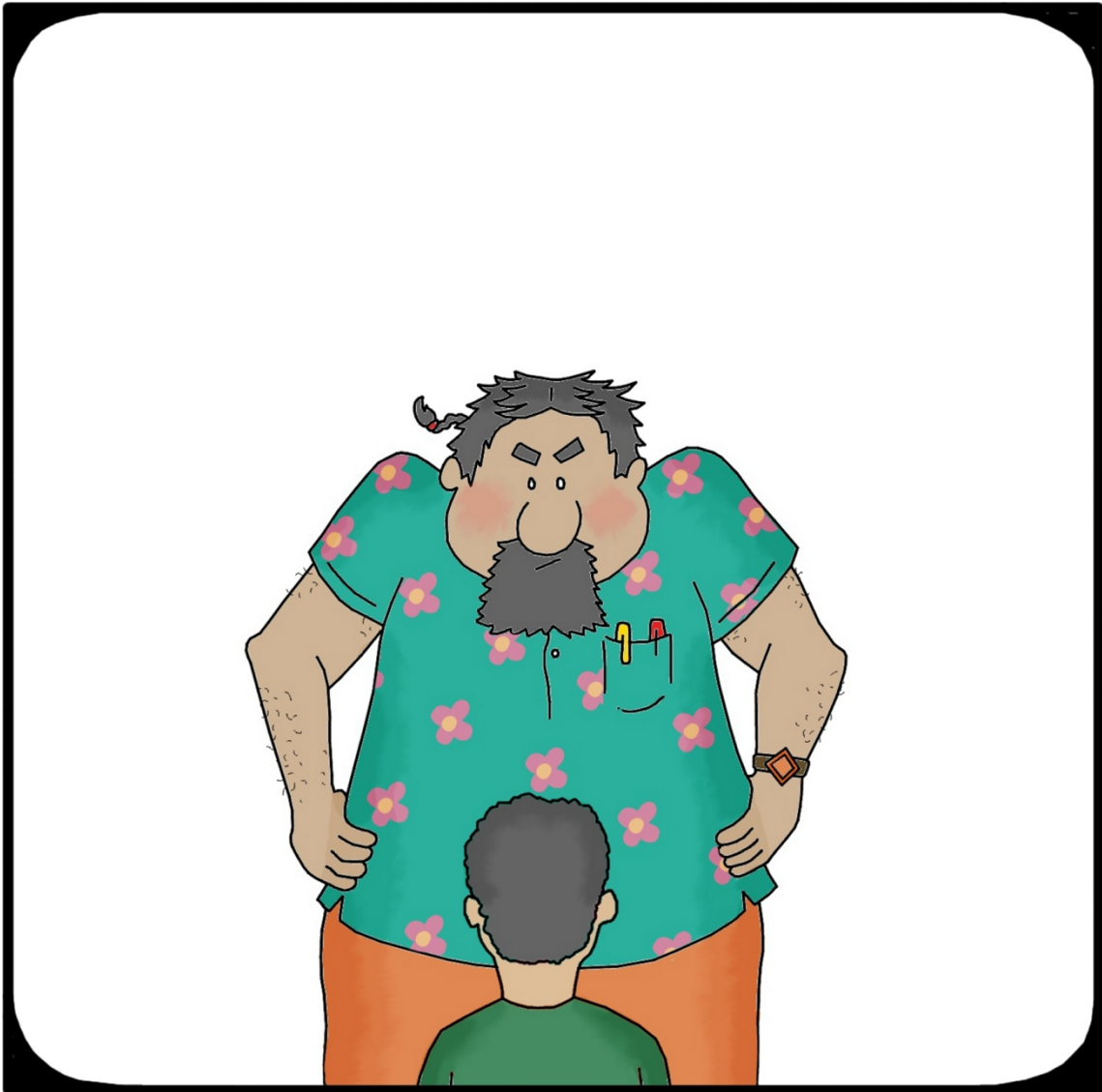
(prolonged silence)



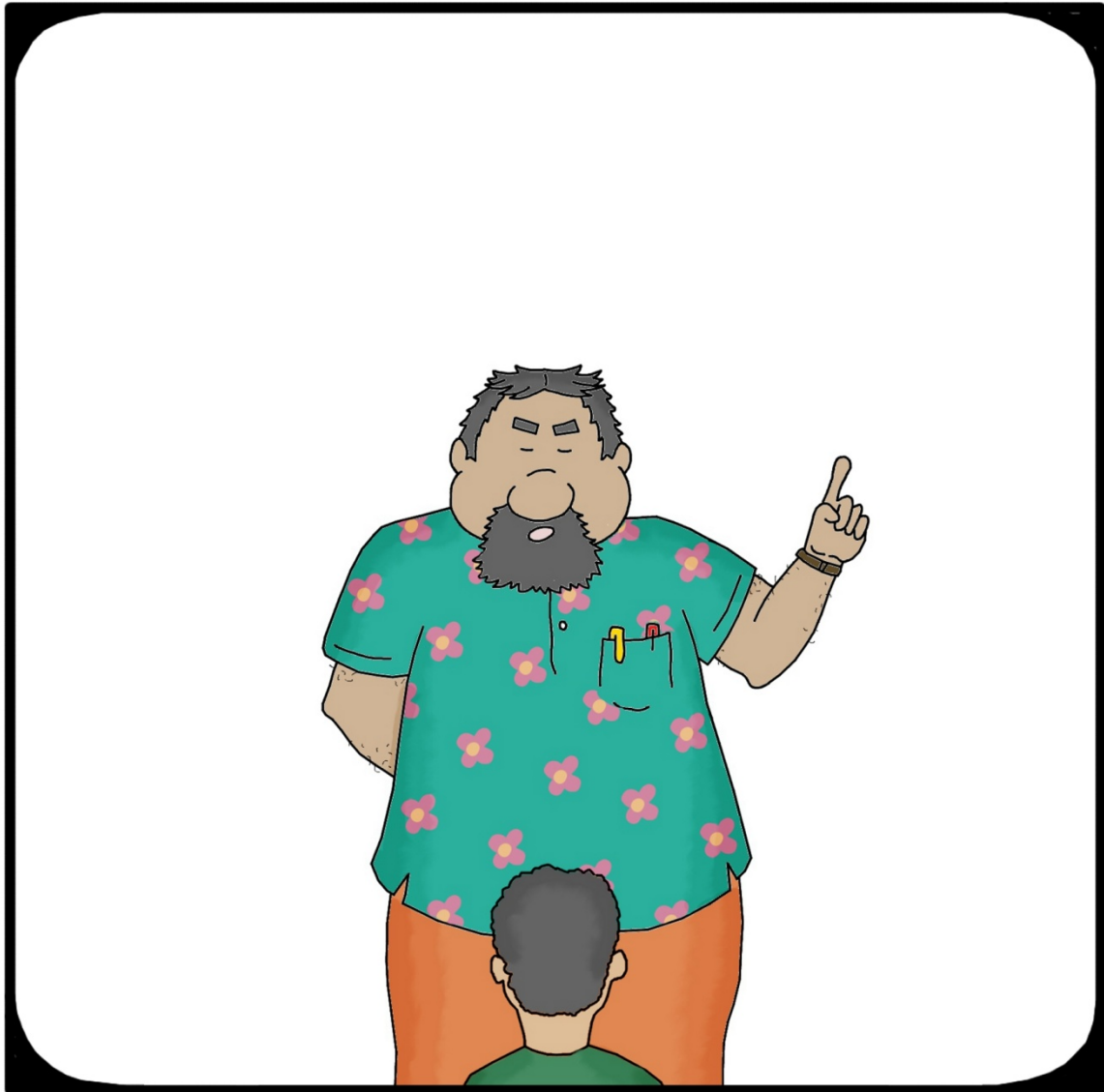
(silence persists)



“WHAT BALDERDASH ARE YOO OTTERING?!
DO YOO EVEN COMPREHEND WHAT THAT SILLY INCLINED
LINE WOULD DO TO MY RECTILNEAR COMPOSITION?!?”



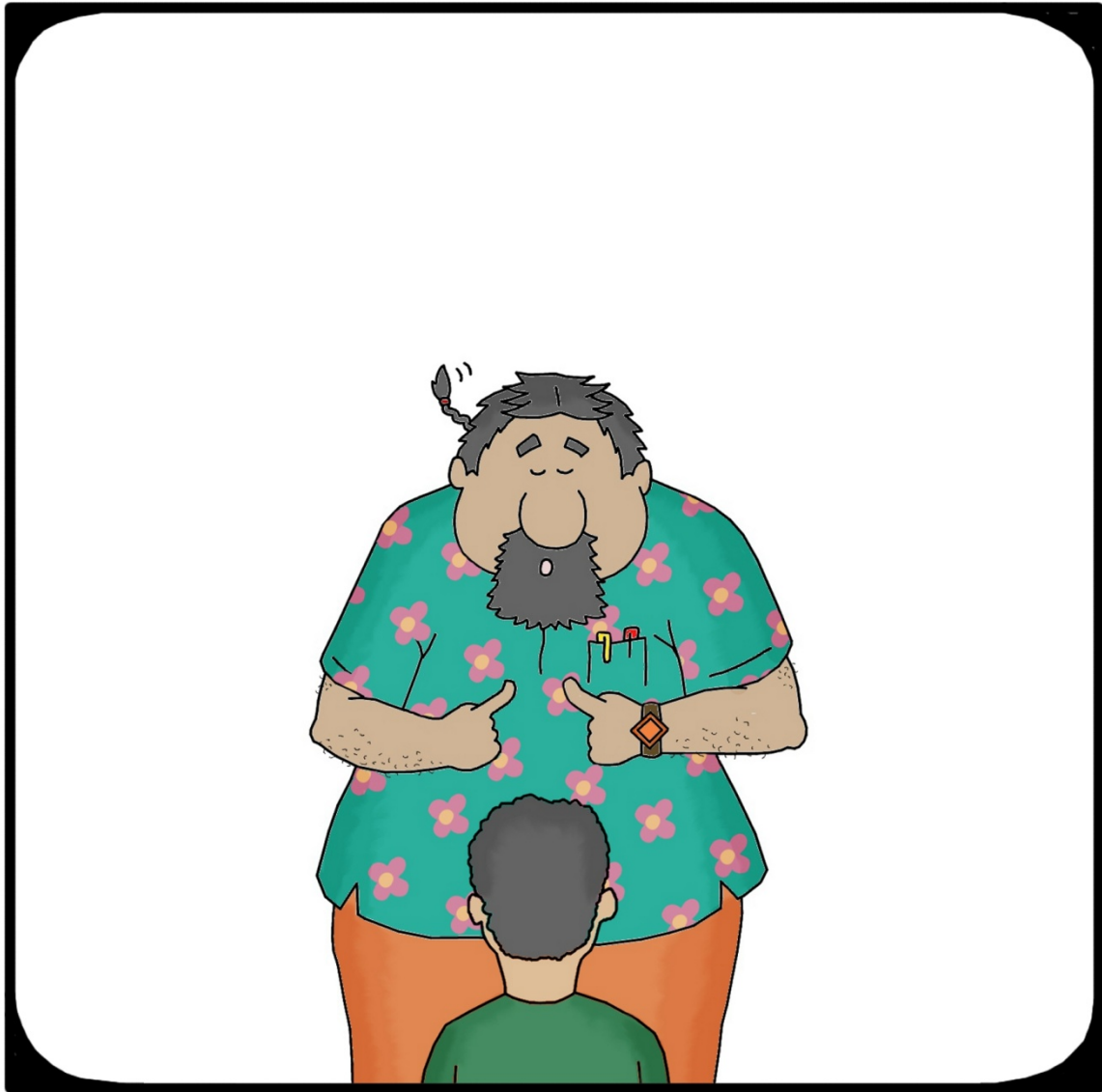
*“NEVER! Did you hear me?
Never will I tolerate such blots on my creative expression.”*



*“Get this straight, kid.
I am. The. Designer.”*



*“I’m the creator, the almighty.
Concrete towers erupt at my command.
The earth makes way for my creations.”*



“The simple fact being,
I ain’t inclusive.
I am exclusive!”



“АААААААААА НАНААА НАНАНА НАААНА НААНА”



“НАНА НАНАНААА ААНАНАНАААН НАНАНААА НАА”



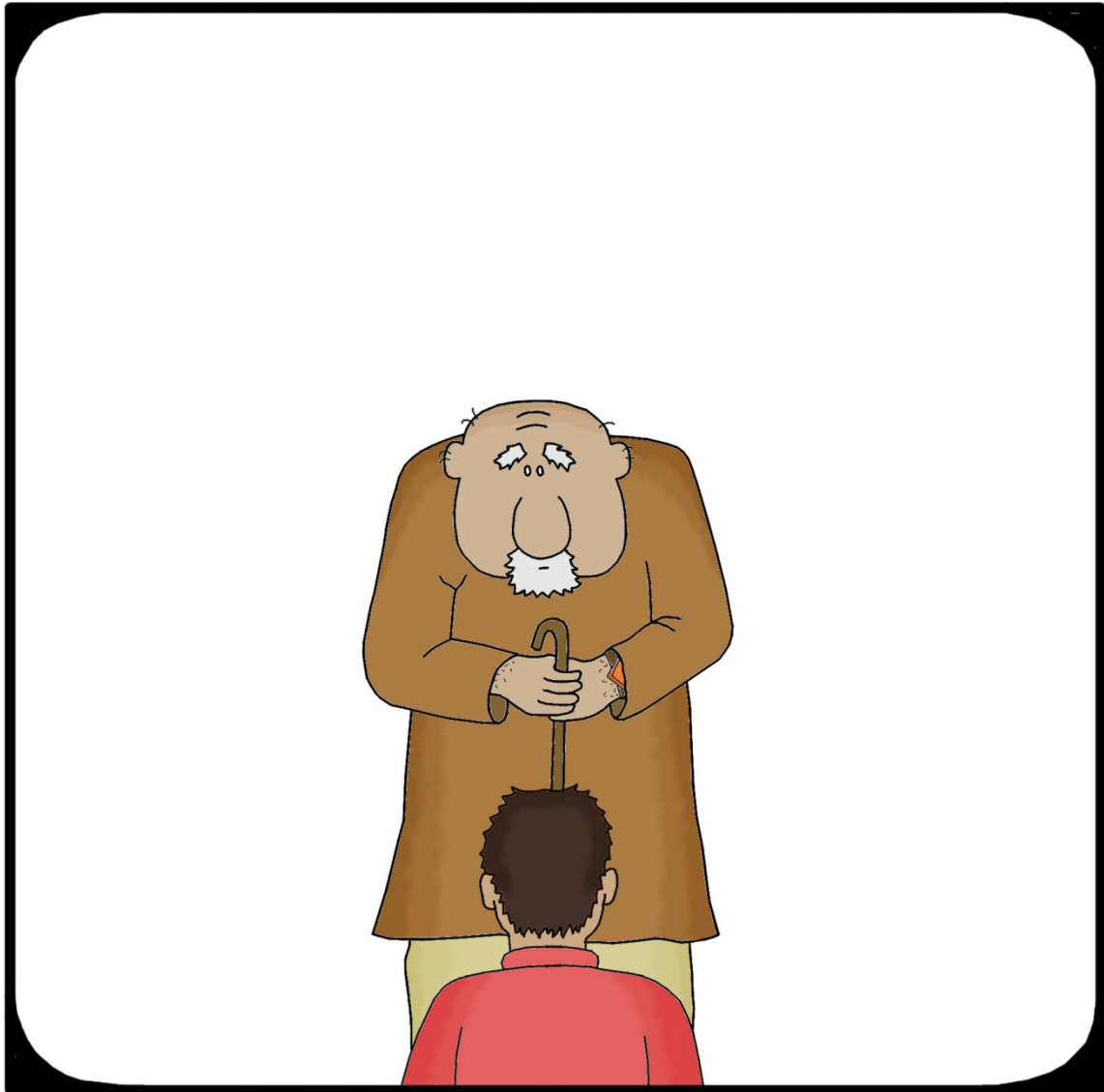
“АААНАА НАНАНААА АНАНАААА НАНААА НА НАА”



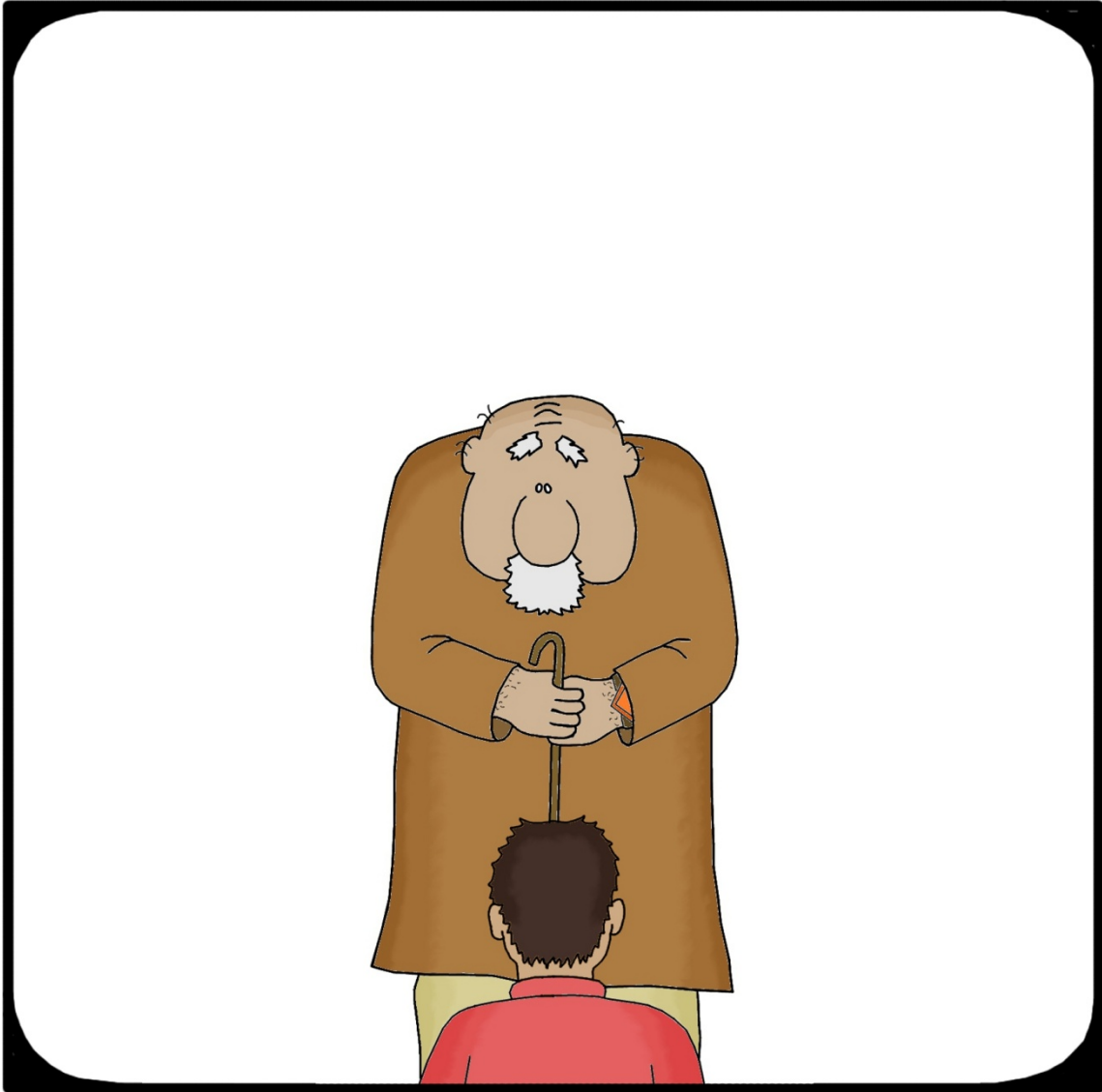
“ААНААААНАА АНАНА НАНАНАА НАА НАНАНАА”



“Sir?”



“Sir, how would you like to get to the entrance foyer?”



“umm....”



“...on a ramp?”

Design to Include.
You'll need it.
Soon.

IN KLOOD